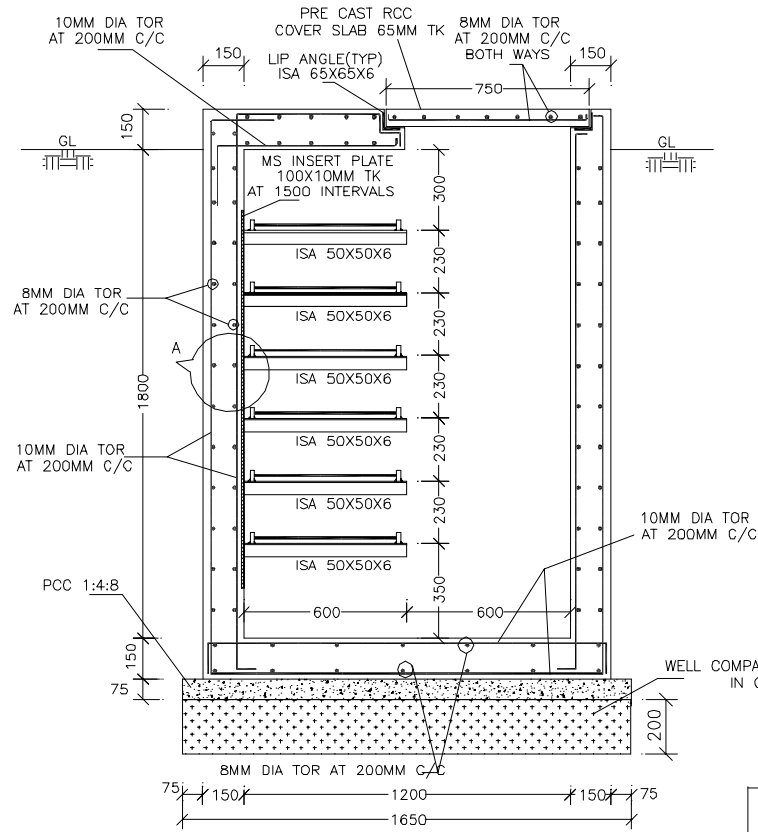


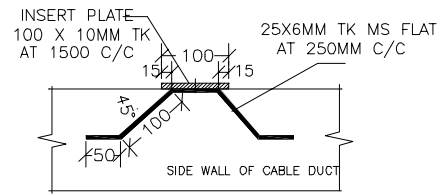
FNAME

REVDATE

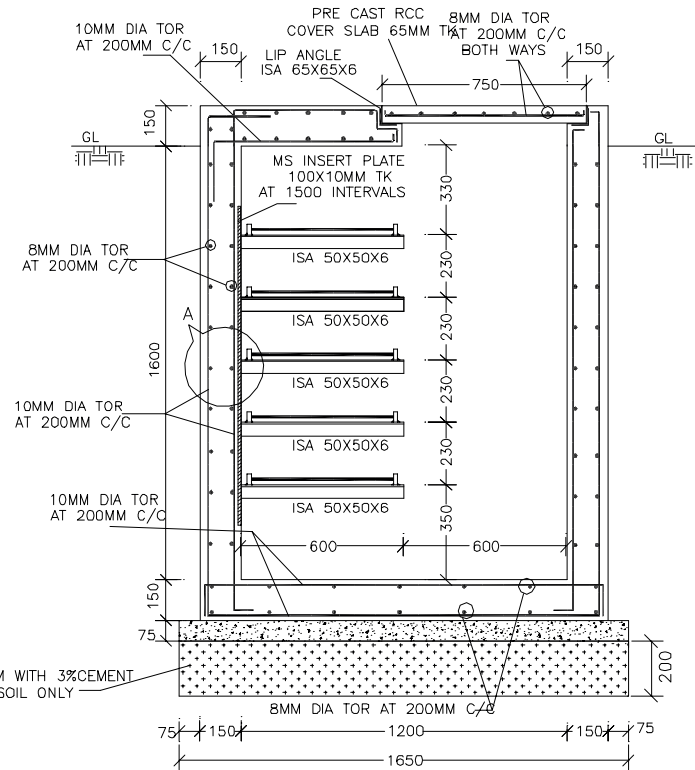
USER



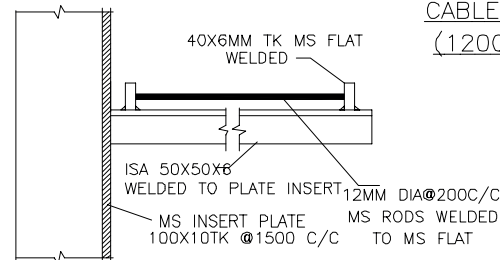
CABLE DUCT TYPE "A"
(1200X1800 CLEAR)



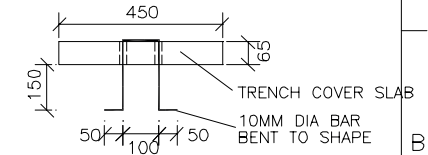
DETAILS OF INSERT PLATE



CABLE DUCT TYPE "B"
(1200X1600 CLEAR)

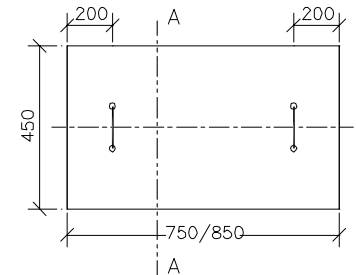


DETAILS AT A



LIFTING HOOK DETAILS

SECTION - AA



COVER SLAB PLAN (TYPICAL)

FOR DETAILS OF CABLE TRAY REFER SHEET 2

NOTES:

- ALL DIMENSIONS ARE IN MMS ONLY UNLESS OTHERWISE SPECIFIED.
- STRUCTURAL CONCRETE SHALL BE OF M20 GRADE.
- LEAN CONCRETE SHALL BE OF 1:4:8 - 75MM TK.
- LAP/ANCHOR LENGTH SHALL BE 50 TIMES THE DIA OF BARS UNLESS OTHERWISE SPECIFIED.
- CLEAR COVER TO MAIN REINFORCEMENT SHALL BE AS FOLLOWS:

ITEMS	TOP	BOTTOM	SIDE
BASE SLAB	25MM	40MM	40MM
PRECAST COVER	-	15MM	25MM
WALL : 25MM (INSIDE FACE) 40MM (EARTH FACE)			

- SUITABLE SLOPE MAY BE PROVIDED FOR DRAINING OF WATER COLLECTED KEEPING THE MIN DEPTH OF DUCT AS SHOWN IN C/S
- THE CONTROL & POWER CABLES FROM MAIN CABLE DUCT TO THE RESPECTIVE EQUIPMENTS MAY BE RUN VIA COMBINATION OF 150MM DIA HUMME PIPES.
- HUMME PIPE OF 300MM DIA (MIN) SHALL BE PROVIDED TO DRAIN OUT THE WATER TO OUTER DRAIN AT CONVENIENT POINTS. SUITABLE MS GRILL MAY BE PROVIDED AT EITHER ENDS OF THE HUMME PIPE TO PREVENT ENTRY OF REPTILES INTO CABLE DUCT.
- LONGITUDINAL SLOPE OF 1 IN 500 & CROSS SLOPE OF 1 IN 250 SHALL BE PROVIDED FOR DRAINING WATER IN CABLE DUCTS.

KARNATAKA POWER TRANSMISSION CORPN LTD

DETAILS OF CABLE DUCT TYPE 'A' & 'B'
FOR 220KV STATIONS

SHEET 1 OF 2

DRG NO: CEE (P&C) / SE (CIVIL) /06-07/220/001/001
NOT TO SCALE

G.R.RAJU					
HDM	AEE(C)	SE(CIVIL)	CHIEF ENGR ELE	PLANNING AND CO ORDINATION	
DRN	DGN	SUB	REC	APPROVED	